



Gaywood Road, Walthamstow, E17

BUTLER  STAG



Stylish two bedroom modern apartment conveniently located between Walthamstow Central station and the wonderful Lloyd Park.



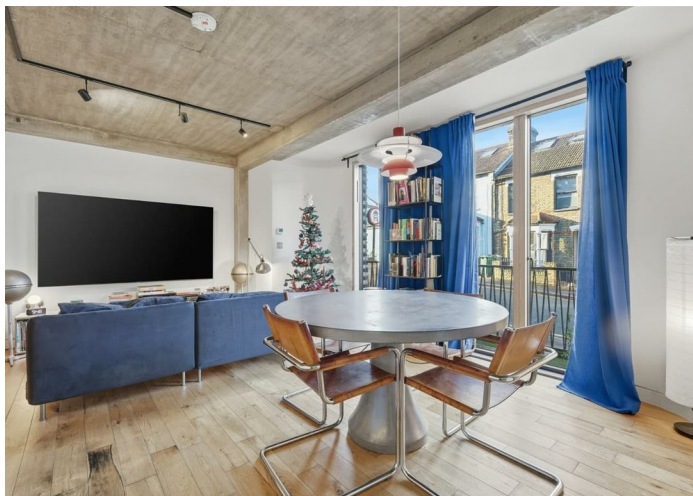
- Stylish Two Bedroom Apartment
- Industrial-Style Interior
- Moments from Lloyd Park
- Unfurnished
- Secure Modern Development
- Access to a Decked Garden Area
- Close to Walthamstow Central Station
- Available from 10th January 2026

Positioned on a quiet residential road, yet a short distance from the vibrant offerings of the High Street and Hoe Street, this excellent property with industrial-style interiors blends urban living with ultra convenience.

Uniquely conceived and featuring a gorgeous open-plan living room / sleek fitted kitchen, the apartment further comprises of two double bedrooms, a contemporary bathroom and access to a decked garden space.

Offered unfurnished and perfectly suited to a professional couple or two sharers, this property is available from 10th January 2026.

EPC Rating B
Council Tax Band C





Pattern Works

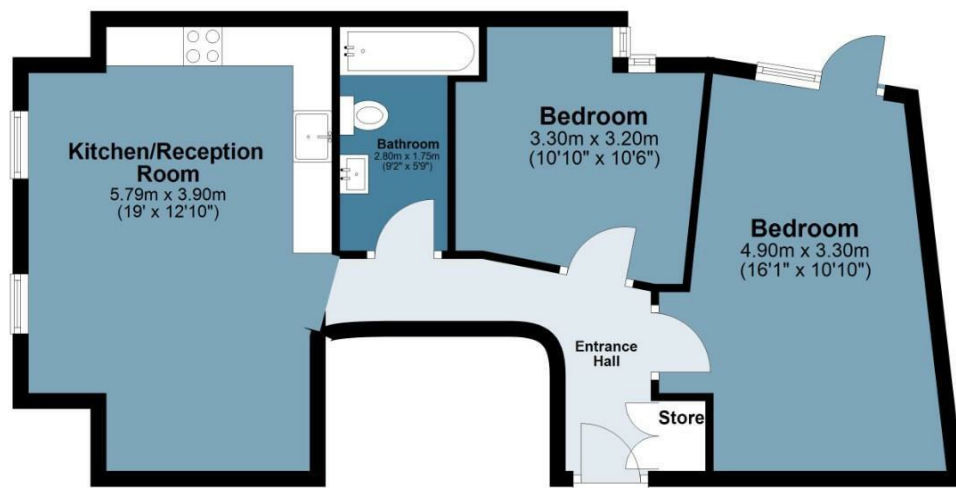
Approx. Gross Internal Area 55.2 Sq M (594.7 Sq Ft)

BUTLER & STAG



Ground Floor

Approx. 55.2 sq. metres (594.7 sq. feet)



Measurements are approximate and for illustration purposes only. While we do not doubt the accuracy and completeness, we advise you conduct a careful independent assessment of the property to determine monetary value.
© @modephoto.uk www.modephoto.co.uk

IMPORTANT NOTICE - These particulars have been prepared in good faith and they are not intended to constitute part of an offer or contract. We have not performed a structural survey on this property and the services, appliances and specific fittings have not been tested. All photographs, measurements, floor plans and distances referred to are given as a guide and should not be relied upon.

BUTLER & STAG

☎ 020 8102 1236

🏠 508 Roman Road, Bow, London, E3 5LU

✉ bow@butlerandstag.com

www.butlerandstag.uk